

The Geography of Discrimination in Voting: MRP Meets the VRA

Christopher S. Elmendorf

University of California, Davis, School of Law

Douglas M. Spencer

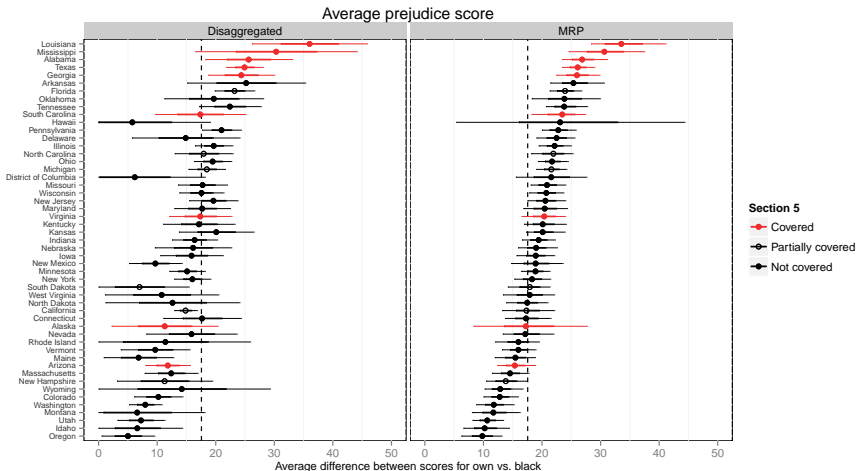
University of Connecticut, School of Law

CCES Conference 2013

Sundance, Utah

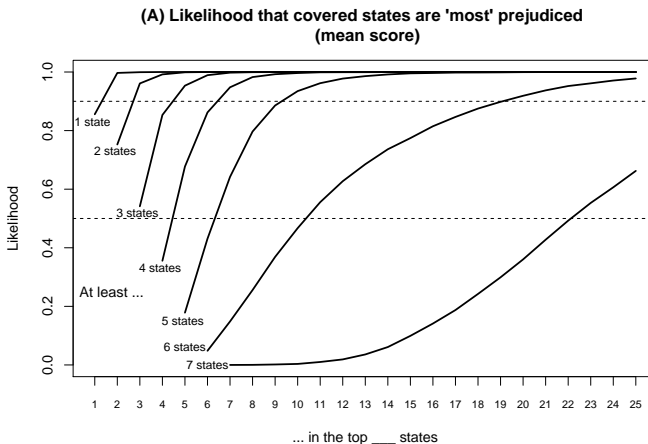
Hitting the bull's eye throwing a dart backwards over shoulder.

MEASURE OF RACIAL PREJUDICE BY STATE (2008)



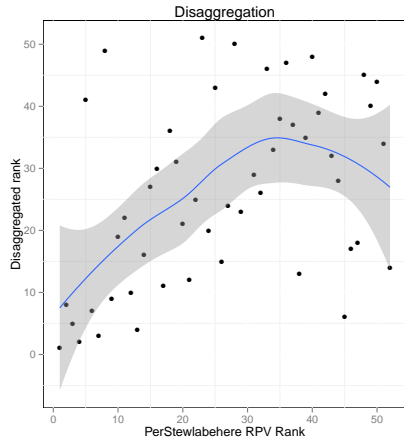
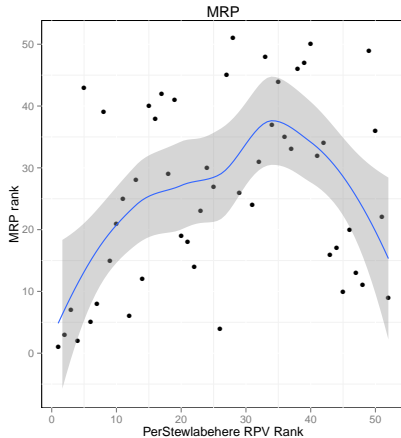
The coverage formula has a “plainly legitimate sweep.”

RANKING COVERED STATES IN 10,000 SIMULATIONS (2008)



Prejudice is ambiguously correlated with racially polarized voting.

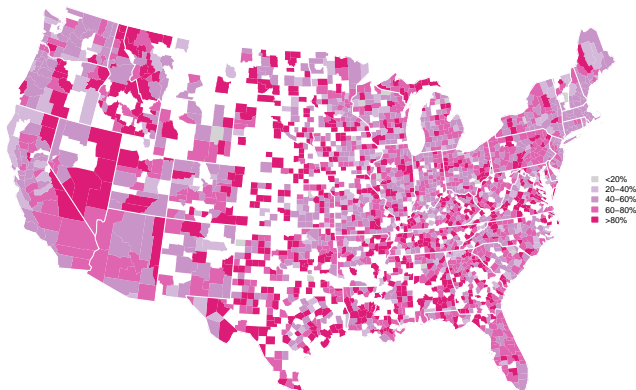
RACIAL PREJUDICE vs. RPV (2008)



The real payoff of MRP will be for sub-state estimation.

RACIAL PREJUDICE AND SECTION 2

County-level prejudice



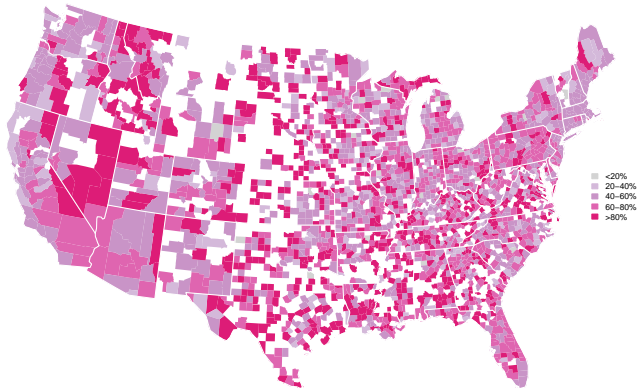
The real payoff of MRP will be for sub-state estimation.

RACIAL PREJUDICE AND SECTION 2

County-level prejudice

**Create sensible
presumptions whether
racial discrimination
impairs minority
political participation**

(Cannot solve “but-for”
causal test)



The Geography of Discrimination in Voting: MRP Meets the VRA

Christopher S. Elmendorf

University of California, Davis, School of Law

Douglas M. Spencer

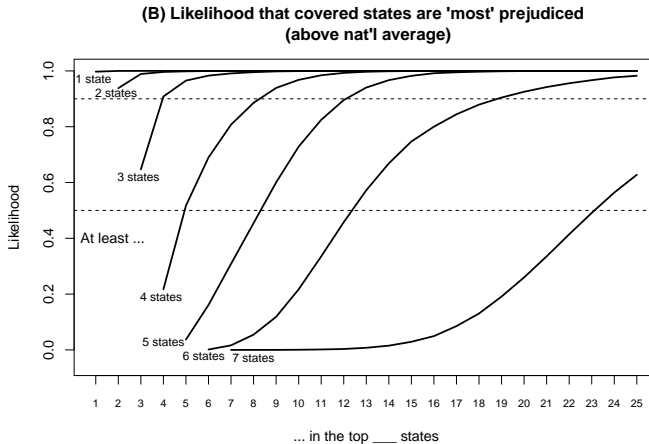
University of Connecticut, School of Law

CCES Conference 2013

Sundance, Utah

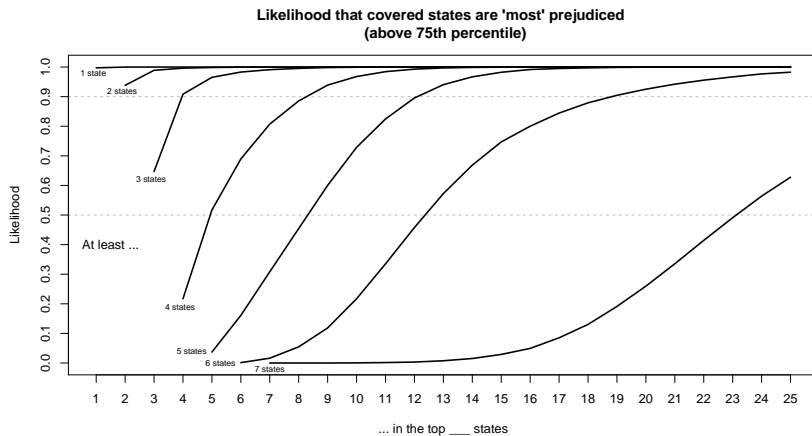
The coverage formula has a “plainly legitimate sweep.”

RANKING COVERED STATES IN 10,000 SIMULATIONS



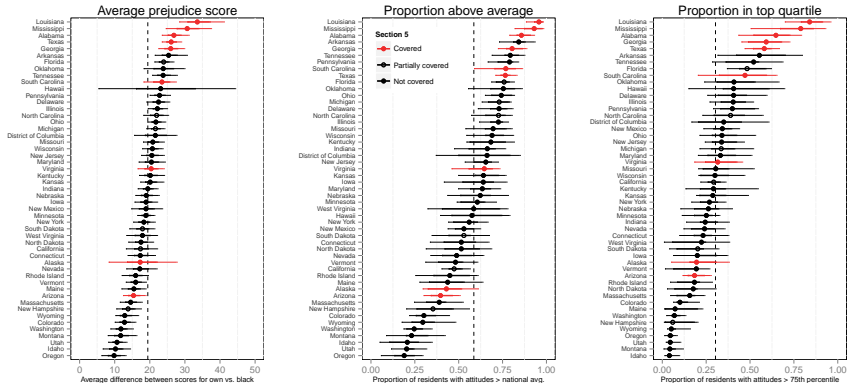
The coverage formula has a “plainly legitimate sweep.”

RANKING COVERED STATES IN 10,000 SIMULATIONS



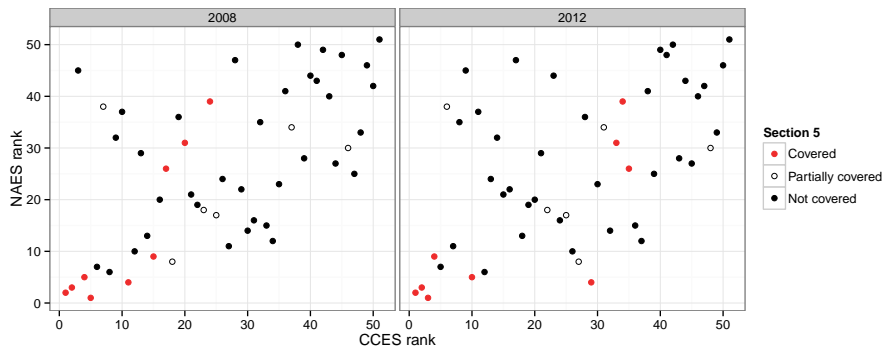
Did Congress “hit the bullseye throwing dart over shoulder”?

MEASURE OF NEGATIVE RACIAL STEREOTYPES BY STATE



Comparing “racial resentment” to “explicit stereotypes.”

CCES vs. ANNENBERG: 2008 & 2012

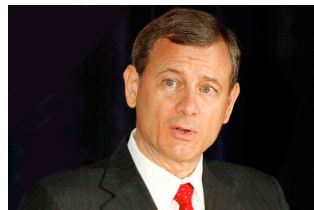


Our project explores *relative* differences in racial attitudes.

SHELBY COUNTY V. HOLDER (ORAL ARGUMENT, FEB. 27, 2013)

CHIEF JUSTICE ROBERTS:

Is it the government's submission that the citizens in the South are more racist than citizens in the North?

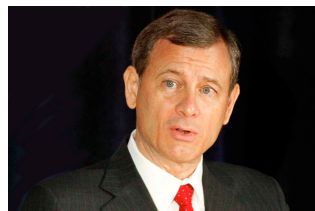


Our project explores *relative* differences in racial attitudes.

SHELBY COUNTY V. HOLDER (ORAL ARGUMENT, FEB. 27, 2013)

CHIEF JUSTICE ROBERTS:

Is it the government's submission that the citizens in the South are more racist than citizens in the North?



SOLICITOR GENERAL VERRILLI:

It is not, and I do not know the answer to that, Your Honor ...

